



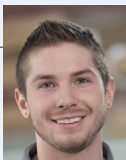
Dam Construction Updates

| Secord and Smallwood Dams

NOTES FROM GROVER the Construction Manager

SECORD

West of the dam, the access roads and storm sewer are under construction and close to completion.



The mobile concrete batch plant has been constructed and began testing the various mix designs for acceptance.

Auxiliary spillway steel sheet pile have continued to be placed and is taking shape.

Before deep excavation takes place of the auxiliary spillway, wells will be drilled in strategic locations to divert the groundwater.



SMALLWOOD

The access roads on the south side of the dam have been completed, with the laydown yard currently under construction. The access road downstream to the power house is under construction as well.

Auxiliary Spillway excavations (north of dam) have been completed, with steel sheet pile driving underway.

Monitoring wells are currently being drilled to monitor the groundwater throughout the embankments.



FROM OUR PROGRAM DIRECTOR

April was a productive month after the spring runoff came and went. At Secord, de-watering engineering, sheet pile driving, and remaining site work kept everyone busy. At Smallwood, auxiliary spillway construction and site preparation advanced. Most of the submittals for the auxiliary spillway materials and methods got approved for both sites. The construction of these spillways is a critical path for both projects and the trajectory for the summer construction looks bright.



- Adam Heinrich



SAFETY

Fisher Contracting put 64 people through safety orientation bringing the total to 198. The projects are going strong, and a positive safety culture on-site is continuing to develop. These stickers on people's hard hats indicate which dams they've gone through safety orientation.

OPERATIONAL UPDATE

Early in April all four lakes rose significantly with the rain that was received. Operations monitored the situation around the clock and were in contact with both counties' emergency management directors. Sanford tailrace came up significantly but not enough to warrant an alert condition. The Sanford Village Park did not flood but did receive erosion along its banks from the event. Once the waters receded all dams and embankments were inspected with no issues. The routine monthly dam safety inspections were completed and all looked good. In preparation for dam reconstruction some fencing was removed at the Tobacco fisherman's access site, tree clearing and debris removal was conducted, and the site was reopened to the public for fishing. Operations has also been performing maintenance on the mowers and weed whips in preparation for the upcoming warmer weather and mowing season.

QUALITY

The project team split the quality control system work into definable features. These are intended to organize the work based on the trades or disciplines. This will allow the project team to track quality during construction.

COST PERFORMANCE INDICATOR (CPI)

1.0

A measure of the conformance of the actual work completed to the actual cost incurred.

SCHEDULE PERFORMANCE INDICATOR (SPI)

1.0

A measure of the conformance of actual progress to the planned progress.

ENVIRONMENTAL REGULATORY COMPLIANCE

Proposed updates to the low-level outlet (LLO) and site access for each dam were shared with the Michigan Department of Environment, Great Lakes, and Energy (EGLE) and we are currently coordinating permit modifications.

<1.0 = poorer-than-planned project performance
1.0 = project performance is on target
>1.0 = better-than-planned project performance