

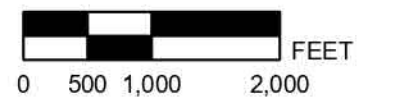
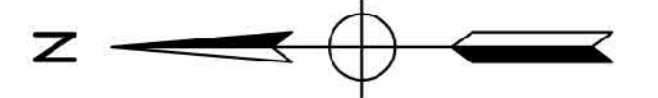


PART 31 PERMIT APPLICATION SANFORD DAM INTERIM STABILIZATION INUNDATION MAPPING

MIDLAND COUNTY, MICHIGAN

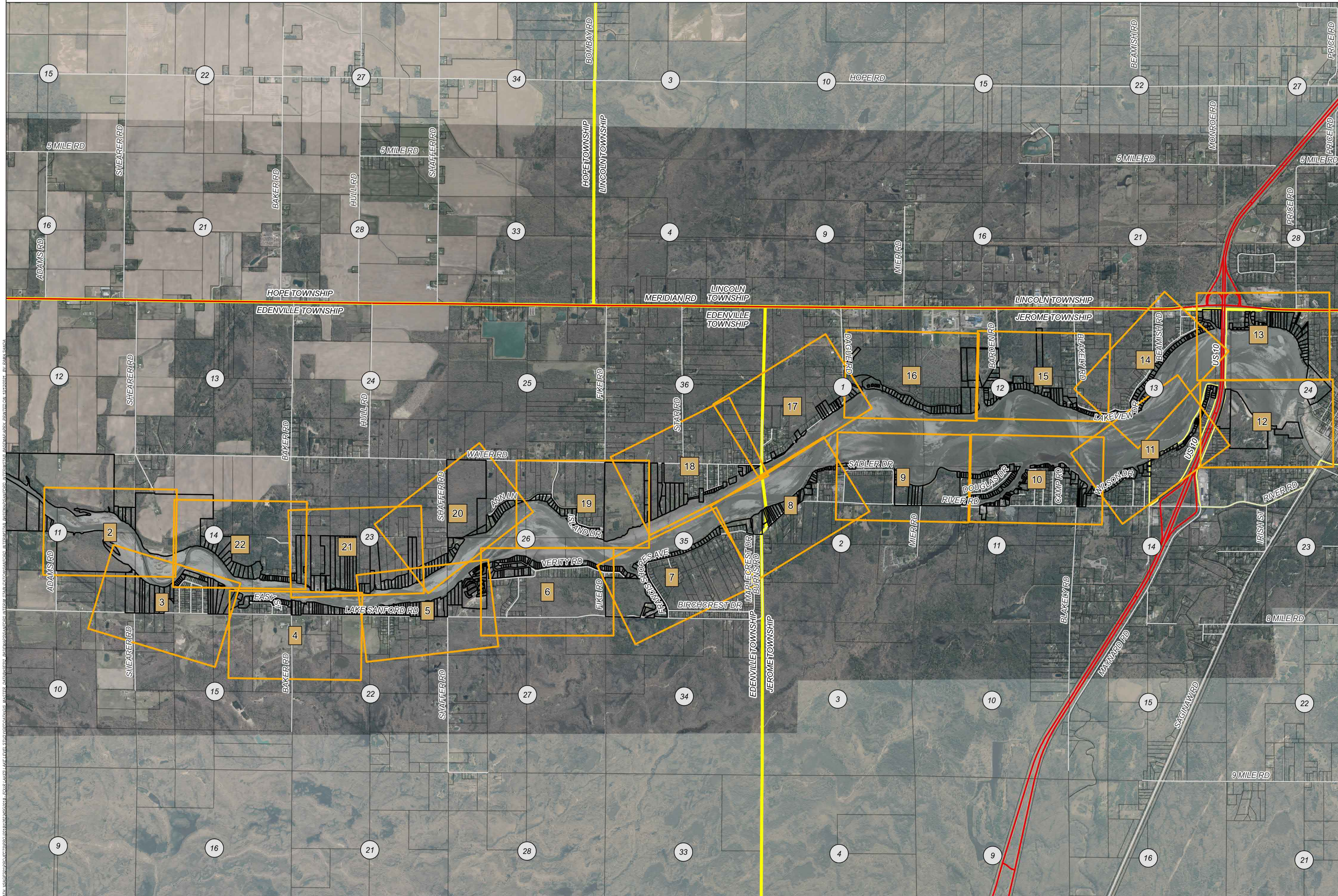


AREA MAP
NOT TO SCALE



LEGEND

- LAKEFRONT PARCELS (FROM MIDLAND GIS)
- MIDLAND GIS PARCELS
- STATE ROADS
- COUNTY ROADS
- VILLAGE BOUNDARY
- MUNICIPALITY BOUNDARY
- # SECTION



RKS	EGLE	BASED ON COMMENTS FROM EGLE ON 12/09/2021	12/09/2021
BY	MARK	REVISIONS	DATE

THE WORK REPRESENTED BY THIS DRAWING WAS DESIGNED BY THE ENGINEER FOR THIS SPECIFIC APPLICATION AND SPECIFIC LOCATION (AS DESCRIBED HEREIN) IN ACCORDANCE WITH THE CONDITIONS PREVALENT AT THE TIME THE DESIGN WAS DONE. THE ENGINEER DOES NOT GUARANTEE AND WILL NOT BE LIABLE FOR ANY OTHER LOCATION, CONDITION, DESIGN OR PURPOSE.

SANFORD DAM - INTERIM STABILIZATION
MIDLAND COUNTY, MICHIGAN

SANFORD DAM - INTERIM STABILIZATION
EGLE PART 31 PERMIT APPLICATION

SAGINAW'S OFFICE
200 S. Washington Ave.
Saginaw, MI 48607
Tel: 989-754-4717
www.SpicerGroup.com

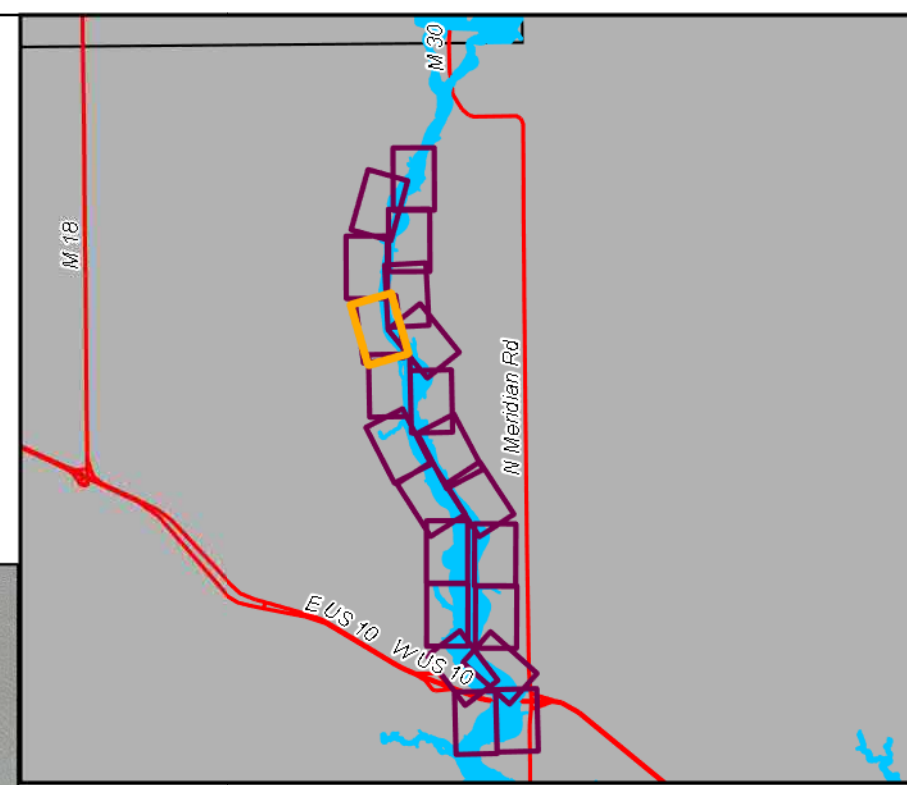
DE. BY: RKS	CH. BY: WTM	PROJECT NO.
DR. BY: RKS	APP. BY: RBH	126234SG2018

STDS.	SHEET 1 OF 22	DR 1
DATE: DECEMBER 2021 SCALE: AS SHOWN	FILE NO. DR-4232	

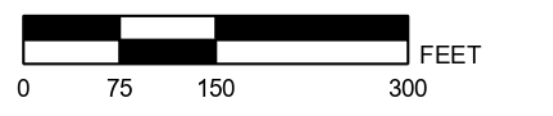
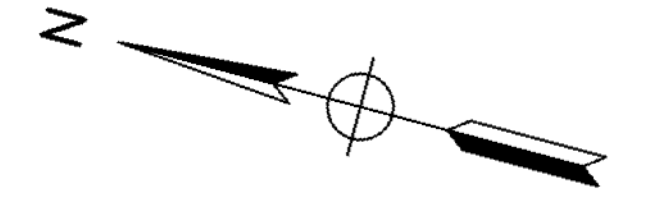


PART 31 PERMIT APPLICATION SANFORD DAM INTERIM STABILIZATION INUNDATION MAPPING

EDENVILLE TOWNSHIP, MIDLAND COUNTY, MICHIGAN



AREA MAP
NOT TO SCALE



LEGEND

- POINTS OF INTEREST
- # PARCEL REFERENCE NUMBER (REFER TO PROPERTY OWNERSHIP SPREADSHEET)
- - - INTERIM STABILIZATION BOUNDARY
- - - POST FLOOD 100 YR BOUNDARY
- - - BASELINE 100 YR BOUNDARY (FEMA)
- - - LEGAL LAKE LEVEL @ 630.8 FT
- - - FLOWAGE RIGHTS CONTOUR @ 638.2 FT
- - - MODEL LIMITS
- ~ ELEVATION REFERENCE LINE (FEMA ELEV / INTERIM STABILIZATION ELEV)
- BUILDING FOOTPRINTS
- LAKEFRONT PARCELS (FROM MIDLAND GIS)
- MIDLAND GIS PARCELS
- STATE ROADS
- COUNTY ROADS
- LOCAL ROADS
- VILLAGE BOUNDARY
- MUNICIPALITY BOUNDARY
- # SECTION



RKS	EGLE	BASED ON COMMENTS FROM EGLE ON 12/09/2021	12/09/2021
BY	MARK	REVISIONS	DATE

THE WORK REPRESENTED BY THIS DRAWING WAS DESIGNED BY THE ENGINEER FOR THIS SPECIFIC APPLICATION AND SPECIFIC LOCATION (AS DESCRIBED HEREIN) IN ACCORDANCE WITH THE CONDITIONS PREVALENT AT THE TIME THE DESIGN WAS DONE. THE ENGINEER DOES NOT GUARANTEE AND WILL NOT BE LIABLE FOR ANY OTHER LOCATION, CONDITION, DESIGN OR PURPOSE.

SANFORD DAM - INTERIM STABILIZATION
MIDLAND COUNTY, MICHIGAN

SANFORD DAM - INTERIM STABILIZATION
EGLE PART 31 PERMIT APPLICATION

Spicer group
SAGINAW'S OFFICE
200 S. Washington Ave.
Saginaw, MI 48607
Tel: 989-754-4717
www.SpicerGroup.com

DE BY: RKS	CH BY: WTM	PROJECT NO.
DR BY: RKS	APP BY: RBH	126234SG2018

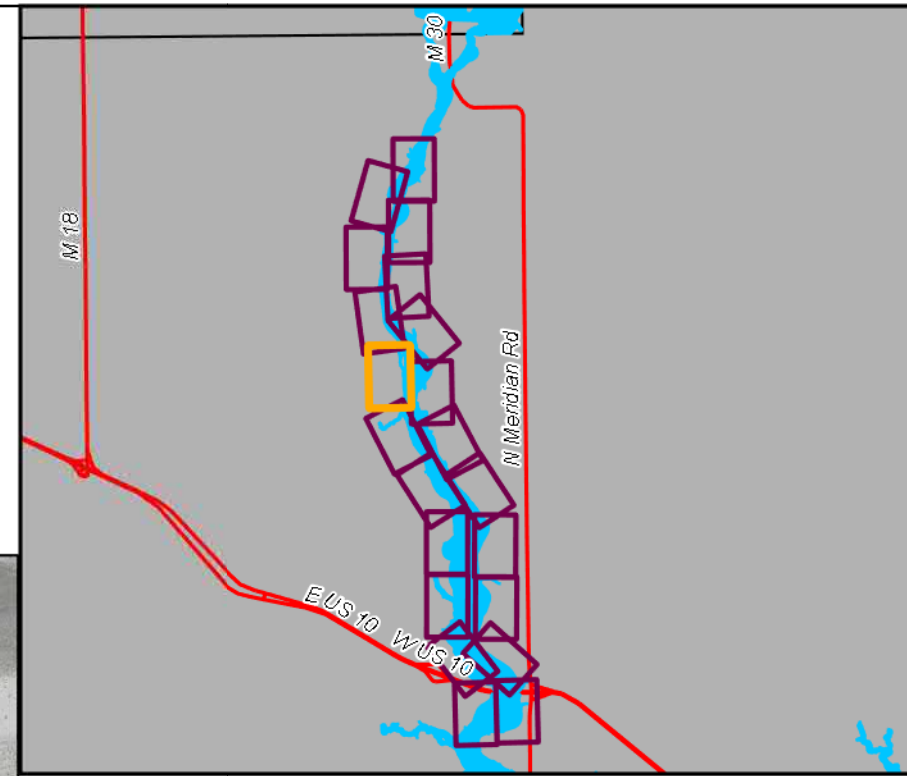
STDs.	SHEET 5 OF 22	DR
DATE: DECEMBER 2021	FILE NO. DR-4232	5
SCALE: AS SHOWN		



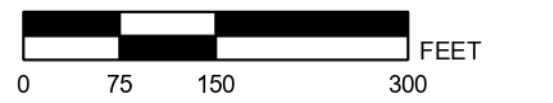
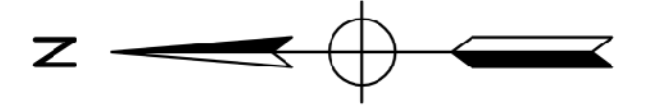
PART 31 PERMIT APPLICATION

SANFORD DAM INTERIM STABILIZATION INUNDATION MAPPING

EDENVILLE TOWNSHIP, MIDLAND COUNTY, MICHIGAN



AREA MAP
NOT TO SCALE



LEGEND

- POINTS OF INTEREST
- # PARCEL REFERENCE NUMBER (REFER TO PROPERTY OWNERSHIP SPREADSHEET)
- - - INTERIM STABILIZATION BOUNDARY
- - - POST FLOOD 100 YR BOUNDARY
- - - BASELINE 100 YR BOUNDARY (FEMA)
- - - LEGAL LAKE LEVEL @ 630.8 FT
- - - FLOWAGE RIGHTS CONTOUR @ 638.2 FT
- MODEL LIMITS
- ~ ELEVATION REFERENCE LINE (FEMA ELEV / INTERIM STABILIZATION ELEV)
- BUILDING FOOTPRINTS
- LAKEFRONT PARCELS (FROM MIDLAND GIS)
- MIDLAND GIS PARCELS
- STATE ROADS
- COUNTY ROADS
- LOCAL ROADS
- VILLAGE BOUNDARY
- MUNICIPALITY BOUNDARY
- # SECTION

BY	MARK	REVISIONS	DATE
RKS	EGLE	BASED ON COMMENTS FROM EGLE ON 12/09/2021	12/09/2021

THE WORK REPRESENTED BY THIS DRAWING WAS DESIGNED BY THE ENGINEER FOR THIS SPECIFIC APPLICATION AND SPECIFIC LOCATION (AS DESCRIBED HEREIN) IN ACCORDANCE WITH THE CONDITIONS PREVALENT AT THE TIME THE DESIGN WAS DONE. THE ENGINEER DOES NOT GUARANTEE AND WILL NOT BE LIABLE FOR ANY OTHER LOCATION, CONDITION, DESIGN OR PURPOSE.

SANFORD DAM - INTERIM STABILIZATION
MIDLAND COUNTY, MICHIGAN

SANFORD DAM - INTERIM STABILIZATION
EGLE PART 31 PERMIT APPLICATION

Spicer group
SAGINAW'S OFFICE
200 S. Washington Ave.
Saginaw, MI 48607
Tel. 989.754.4717
www.SpicerGroup.com

DE. BY: RKS CH. BY: WTM PROJECT NO. 126234SG2018
DR. BY: RKS APP. BY: RBH

STDs. SHEET 6 OF 22 DR 6
DATE: DECEMBER 2021 FILE NO. DR-4232
SCALE: AS SHOWN

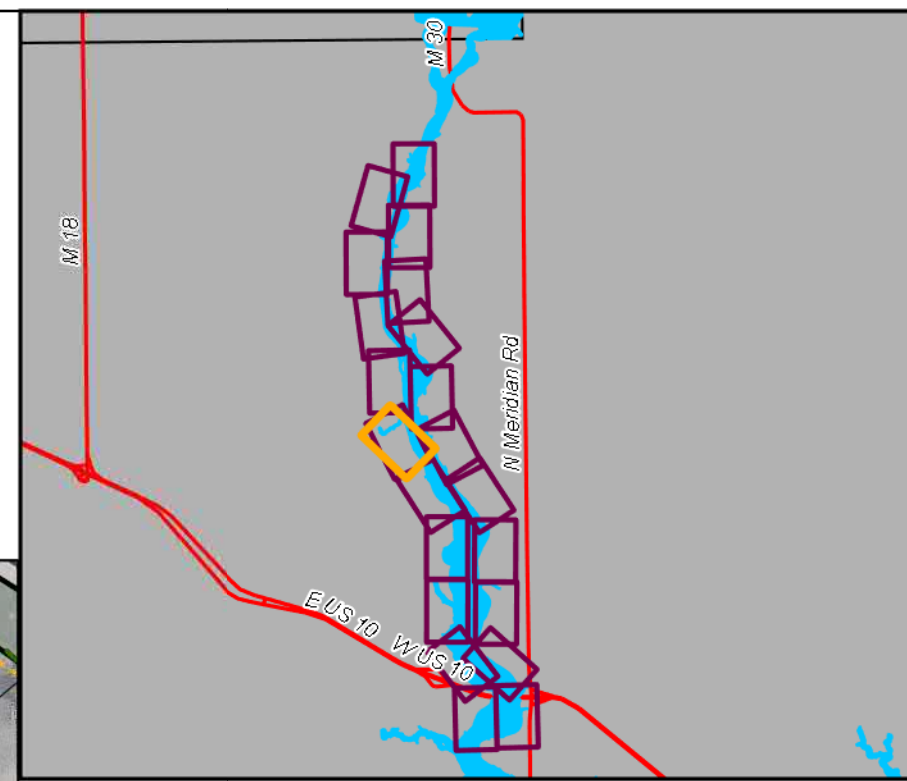


PATH: H:\GIS\PROJECTS\2021\12\DR_4232\2021_12_09\126234SG2018_PART31_PERMIT_APPLICATION\INTERIM_STABILIZATION_MAPPING\126234SG2018_PART31_PERMIT_APPLICATION_SANFORD_DAM_INTERIM_STABILIZATION_MAPPING.aprx

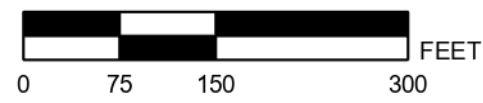
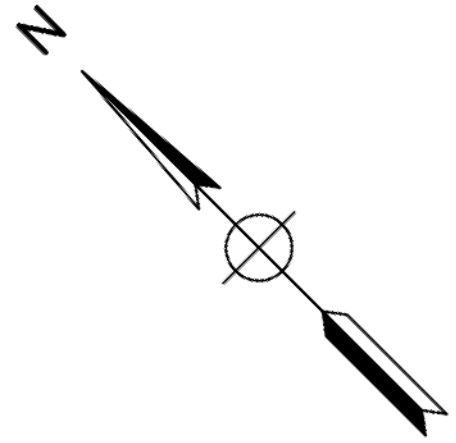


PART 31 PERMIT APPLICATION SANFORD DAM INTERIM STABILIZATION INUNDATION MAPPING

EDENVILLE TOWNSHIP, MIDLAND COUNTY, MICHIGAN



AREA MAP
NOT TO SCALE



LEGEND

- POINTS OF INTEREST
- # PARCEL REFERENCE NUMBER (REFER TO PROPERTY OWNERSHIP SPREADSHEET)
- INTERIM STABILIZATION BOUNDARY
- POST FLOOD 100 YR BOUNDARY
- BASELINE 100 YR BOUNDARY (FEMA)
- LEGAL LAKE LEVEL @ 630.8 FT
- FLOWAGE RIGHTS CONTOUR @ 638.2 FT
- MODEL LIMITS
- ELEVATION REFERENCE LINE (FEMA ELEV / INTERIM STABILIZATION ELEV)
- BUILDING FOOTPRINTS
- LAKEFRONT PARCELS (FROM MIDLAND GIS)
- MIDLAND GIS PARCELS
- STATE ROADS
- COUNTY ROADS
- LOCAL ROADS
- VILLAGE BOUNDARY
- MUNICIPALITY BOUNDARY
- # SECTION

RKS	EGLE	BASED ON COMMENTS FROM EGLE ON 12/09/2021	12/09/2021
BY	MARK	REVISIONS	DATE

THE WORK REPRESENTED BY THIS DRAWING WAS DESIGNED BY THE ENGINEER FOR THIS SPECIFIC APPLICATION AND SPECIFIC LOCATION (AS DESCRIBED HEREIN) IN ACCORDANCE WITH THE CONDITIONS PREVALENT AT THE TIME THE DESIGN WAS DONE. THE ENGINEER DOES NOT GUARANTEE AND WILL NOT BE LIABLE FOR ANY OTHER LOCATION, CONDITION, DESIGN OR PURPOSE.

SANFORD DAM - INTERIM STABILIZATION
MIDLAND COUNTY, MICHIGAN

SANFORD DAM - INTERIM STABILIZATION
EGLE PART 31 PERMIT APPLICATION

Spicer group
SAGINAW'S OFFICE
200 S. Washington Ave.
Saginaw, MI 48607
Tel: 989-754-4717
www.SpicerGroup.com

DE. BY: RKS	CH. BY: WTM	PROJECT NO.
DR. BY: RKS	APP. BY: RBH	126234SG2018

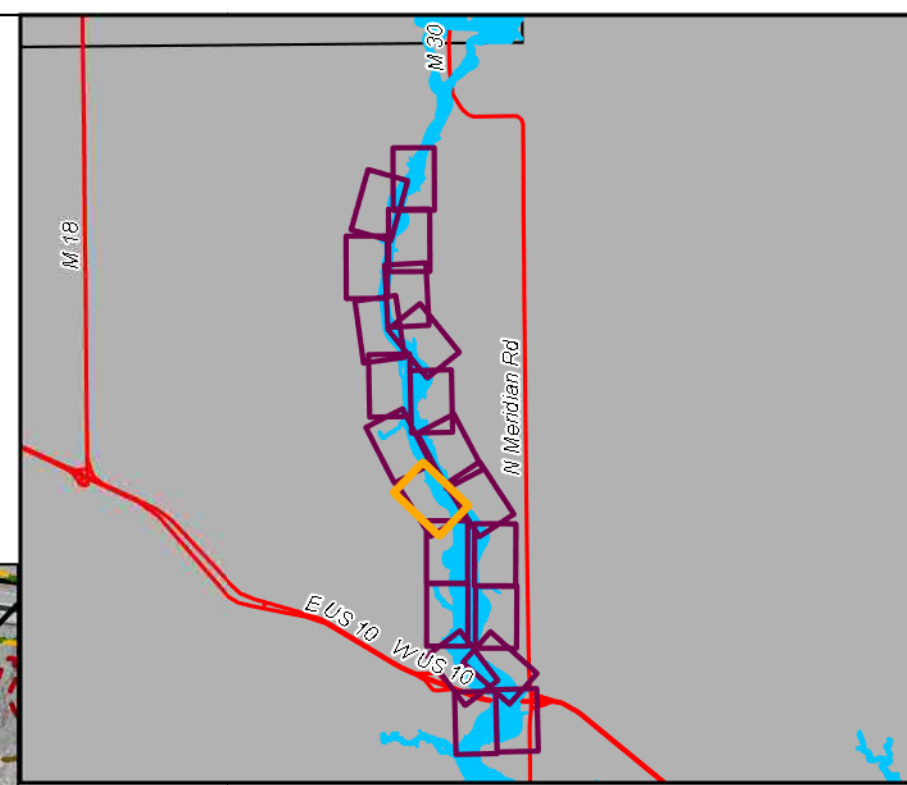
STDS.	SHEET 7 OF 22	DR 7
DATE: DECEMBER 2021	FILE NO. DR-4232	
SCALE: AS SHOWN		



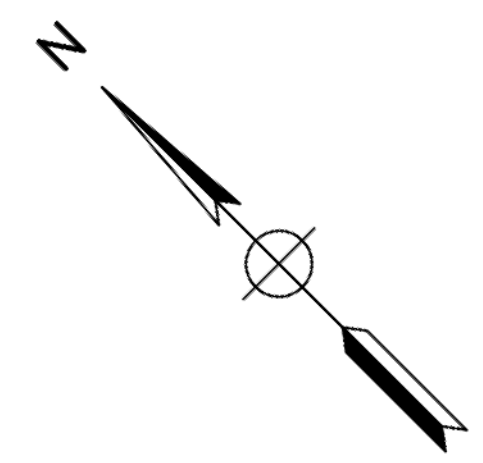


PART 31 PERMIT APPLICATION SANFORD DAM INTERIM STABILIZATION INUNDATION MAPPING

EDENVILLE / JEROME TOWNSHIP, MIDLAND COUNTY, MICHIGAN



AREA MAP
NOT TO SCALE



LEGEND

- POINTS OF INTEREST
- # PARCEL REFERENCE NUMBER (REFER TO PROPERTY OWNERSHIP SPREADSHEET)
- - - INTERIM STABILIZATION BOUNDARY
- - - POST FLOOD 100 YR BOUNDARY
- - - BASELINE 100 YR BOUNDARY (FEMA)
- - - LEGAL LAKE LEVEL @ 630.8 FT
- - - FLOWAGE RIGHTS CONTOUR @ 638.2 FT
- - - MODEL LIMITS
- ~ ELEVATION REFERENCE LINE (FEMA ELEV / INTERIM STABILIZATION ELEV)
- BUILDING FOOTPRINTS
- LAKEFRONT PARCELS (FROM MIDLAND GIS)
- MIDLAND GIS PARCELS
- STATE ROADS
- COUNTY ROADS
- LOCAL ROADS
- VILLAGE BOUNDARY
- MUNICIPALITY BOUNDARY
- # SECTION

RKS	EGL	REVISIONS	DATE
BY	MARK		

BASED ON COMMENTS FROM EGLE ON 12/09/2021
 THE WORK REPRESENTED BY THIS DRAWING WAS DESIGNED BY THE ENGINEER FOR THIS SPECIFIC APPLICATION AND SPECIFIC LOCATION (AS DESCRIBED HEREIN) IN ACCORDANCE WITH THE CONDITIONS PREVALENT AT THE TIME THE DESIGN WAS DONE. THE ENGINEER DOES NOT GUARANTEE AND WILL NOT BE LIABLE FOR ANY OTHER LOCATION, CONDITION, DESIGN OR PURPOSE.

SANFORD DAM - INTERIM STABILIZATION
MIDLAND COUNTY, MICHIGAN

SANFORD DAM - INTERIM STABILIZATION
EGLE PART 31 PERMIT APPLICATION



DE. BY: RKS	CH. BY: WTM	PROJECT NO.
DR. BY: RKS	APP. BY: RBH	126234SG2018

STDS.	SHEET 8 OF 22	DR
DATE: DECEMBER 2021	FILE NO. DR-4232	8
SCALE: AS SHOWN		

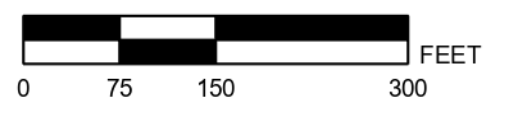
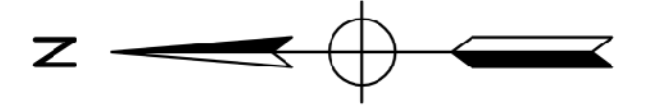


PART 31 PERMIT APPLICATION SANFORD DAM INTERIM STABILIZATION INUNDATION MAPPING

JEROME TOWNSHIP, MIDLAND COUNTY, MICHIGAN



AREA MAP
NOT TO SCALE



LEGEND

- POINTS OF INTEREST
- # PARCEL REFERENCE NUMBER (REFER TO PROPERTY OWNERSHIP SPREADSHEET)
- - - INTERIM STABILIZATION BOUNDARY
- - - POST FLOOD 100 YR BOUNDARY
- - - BASELINE 100 YR BOUNDARY (FEMA)
- - - LEGAL LAKE LEVEL @ 630.8 FT
- - - FLOWAGE RIGHTS CONTOUR @ 638.2 FT
- - - MODEL LIMITS
- # ELEVATION REFERENCE LINE (FEMA ELEV / INTERIM STABILIZATION ELEV)
- BUILDING FOOTPRINTS
- LAKEFRONT PARCELS (FROM MIDLAND GIS)
- MIDLAND GIS PARCELS
- STATE ROADS
- COUNTY ROADS
- LOCAL ROADS
- ▭ VILLAGE BOUNDARY
- ▭ MUNICIPALITY BOUNDARY
- # SECTION



BY	MARK	REVISIONS	DATE
RKS	EGLE	BASED ON COMMENTS FROM EGLE ON 12/09/2021	12/09/2021

THE WORK REPRESENTED BY THIS DRAWING WAS DESIGNED BY THE ENGINEER FOR THIS SPECIFIC APPLICATION AND SPECIFIC LOCATION (AS DESCRIBED HEREIN) IN ACCORDANCE WITH THE CONDITIONS PREVALENT AT THE TIME THE DESIGN WAS DONE. THE ENGINEER DOES NOT GUARANTEE AND WILL NOT BE LIABLE FOR ANY OTHER LOCATION, CONDITION, DESIGN OR PURPOSE.

SANFORD DAM - INTERIM STABILIZATION
MIDLAND COUNTY, MICHIGAN

SANFORD DAM - INTERIM STABILIZATION
EGLE PART 31 PERMIT APPLICATION

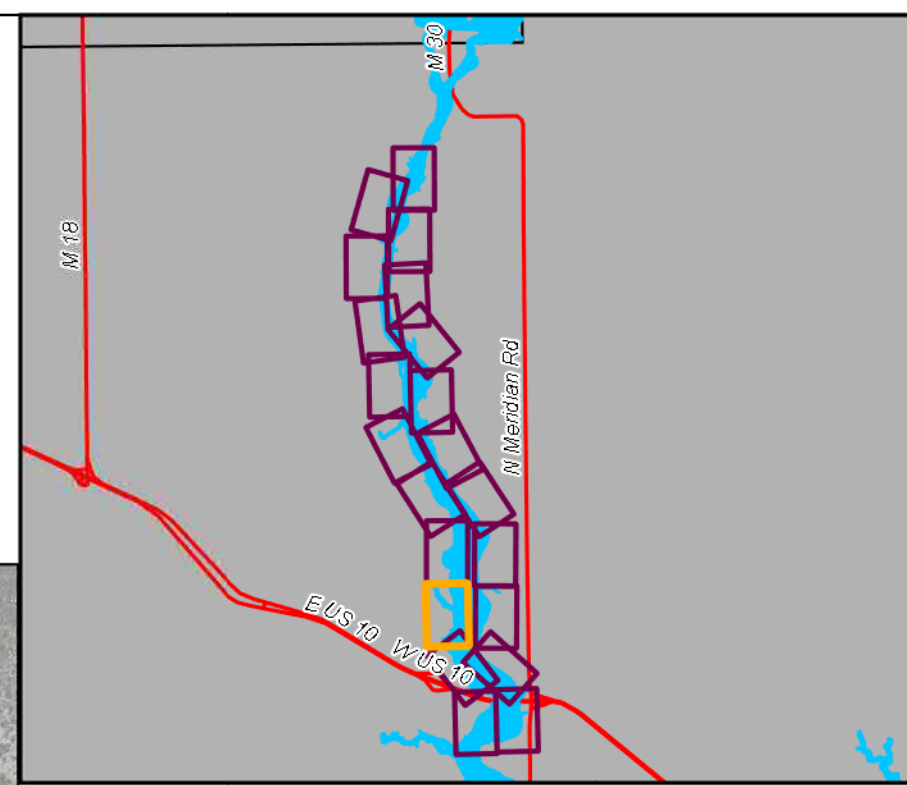
SAGINAW'S OFFICE
230 S. Washington Ave.
Saginaw, MI 48607
Tel: 989-754-4717
www.SpicerGroup.com

DE. BY: RKS DR. BY: RKS	CH. BY: WTM APP. BY: RBH	PROJECT NO. 126234SG2018
STDS.	SHEET 9 OF 22	DR 9
DATE: DECEMBER 2021 SCALE: AS SHOWN	FILE NO. DR-4232	

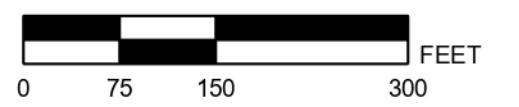
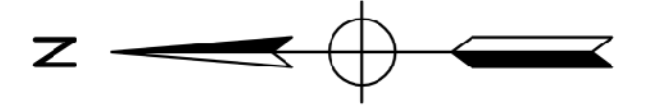


PART 31 PERMIT APPLICATION SANFORD DAM INTERIM STABILIZATION INUNDATION MAPPING

JEROME TOWNSHIP, MIDLAND COUNTY, MICHIGAN



AREA MAP
NOT TO SCALE



LEGEND

- POINTS OF INTEREST
- # PARCEL REFERENCE NUMBER (REFER TO PROPERTY OWNERSHIP SPREADSHEET)
- - - INTERIM STABILIZATION BOUNDARY
- - - POST FLOOD 100 YR BOUNDARY
- - - BASELINE 100 YR BOUNDARY (FEMA)
- - - LEGAL LAKE LEVEL @ 630.8 FT
- - - FLOWAGE RIGHTS CONTOUR @ 638.2 FT
- - - MODEL LIMITS
- # ELEVATION REFERENCE LINE (FEMA ELEV / INTERIM STABILIZATION ELEV)
- BUILDING FOOTPRINTS
- ▭ LAKEFRONT PARCELS (FROM MIDLAND GIS)
- ▭ MIDLAND GIS PARCELS
- STATE ROADS
- COUNTY ROADS
- LOCAL ROADS
- ▭ VILLAGE BOUNDARY
- ▭ MUNICIPALITY BOUNDARY
- # SECTION

RKS	EGLE	BASED ON COMMENTS FROM EGLE ON 12/09/2021	12/09/2021
BY	MARK	REVISIONS	DATE

THE WORK REPRESENTED BY THIS DRAWING WAS DESIGNED BY THE ENGINEER FOR THIS SPECIFIC APPLICATION AND SPECIFIC LOCATION (DESCRIBED HEREIN) IN ACCORDANCE WITH THE CONDITIONS PREVALENT AT THE TIME THE DESIGN WAS DONE. THE ENGINEER DOES NOT GUARANTEE AND WILL NOT BE LIABLE FOR ANY OTHER LOCATION, CONDITION, DESIGN OR PURPOSE.

SANFORD DAM - INTERIM STABILIZATION
MIDLAND COUNTY, MICHIGAN

SANFORD DAM - INTERIM STABILIZATION
EGLE PART 31 PERMIT APPLICATION



DE BY: RKS	CH BY: WTM	PROJECT NO.
DR BY: RKS	APP BY: RBH	126234SG2018

STDs.	SHEET 10 OF 22	DR
DATE: DECEMBER 2021	FILE NO.	DR-4232
SCALE: AS SHOWN		10

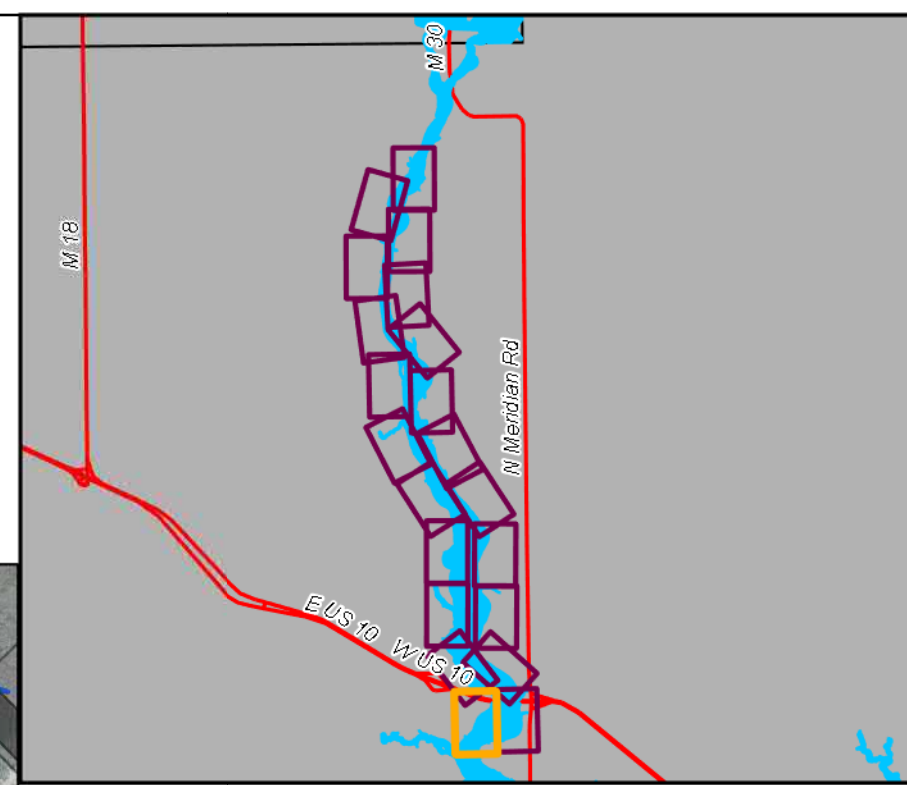


DATA: MIDLAND COUNTY GIS DATA FOR PARCELS AND ROADS. AERIAL PHOTOGRAPHY FROM GOOGLE EARTH. LEGAL LAKE LEVEL: 630.8 FT. INTERIM STABILIZATION ELEVATION: 638.2 FT. POST FLOOD 100 YR BOUNDARY: 630.8 FT. BASELINE 100 YR BOUNDARY: 630.8 FT. FLOWAGE RIGHTS CONTOUR: 638.2 FT. MODEL LIMITS: 638.2 FT.

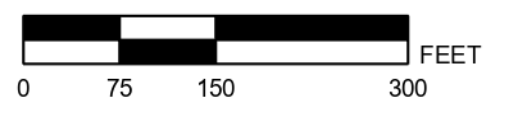
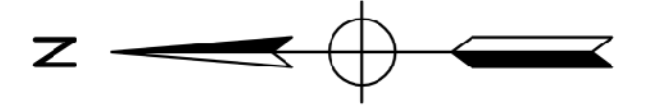


PART 31 PERMIT APPLICATION SANFORD DAM INTERIM STABILIZATION INUNDATION MAPPING

JEROME TOWNSHIP, MIDLAND COUNTY, MICHIGAN



AREA MAP
NOT TO SCALE



LEGEND

- POINTS OF INTEREST
- # PARCEL REFERENCE NUMBER (REFER TO PROPERTY OWNERSHIP SPREADSHEET)
- - - INTERIM STABILIZATION BOUNDARY
- - - POST FLOOD 100 YR BOUNDARY
- - - BASELINE 100 YR BOUNDARY (FEMA)
- - - LEGAL LAKE LEVEL @ 630.8 FT
- - - FLOWAGE RIGHTS CONTOUR @ 638.2 FT
- - - MODEL LIMITS
- - - ELEVATION REFERENCE LINE (FEMA ELEV / INTERIM STABILIZATION ELEV)
- BUILDING FOOTPRINTS
- LAKEFRONT PARCELS (FROM MIDLAND GIS)
- MIDLAND GIS PARCELS
- STATE ROADS
- COUNTY ROADS
- LOCAL ROADS
- VILLAGE BOUNDARY
- MUNICIPALITY BOUNDARY
- # SECTION

RKS	EGLE	BASED ON COMMENTS FROM EGLE ON 12/09/2021	12/09/2021
BY	MARK	REVISIONS	DATE

THE WORK REPRESENTED BY THIS DRAWING WAS DESIGNED BY THE ENGINEER FOR THIS SPECIFIC APPLICATION AND SPECIFIC LOCATION (AS DESCRIBED HEREIN) IN ACCORDANCE WITH THE CONDITIONS PREVALENT AT THE TIME THE DESIGN WAS DONE. THE ENGINEER DOES NOT GUARANTEE AND WILL NOT BE LIABLE FOR ANY OTHER LOCATION, CONDITION, DESIGN OR PURPOSE.

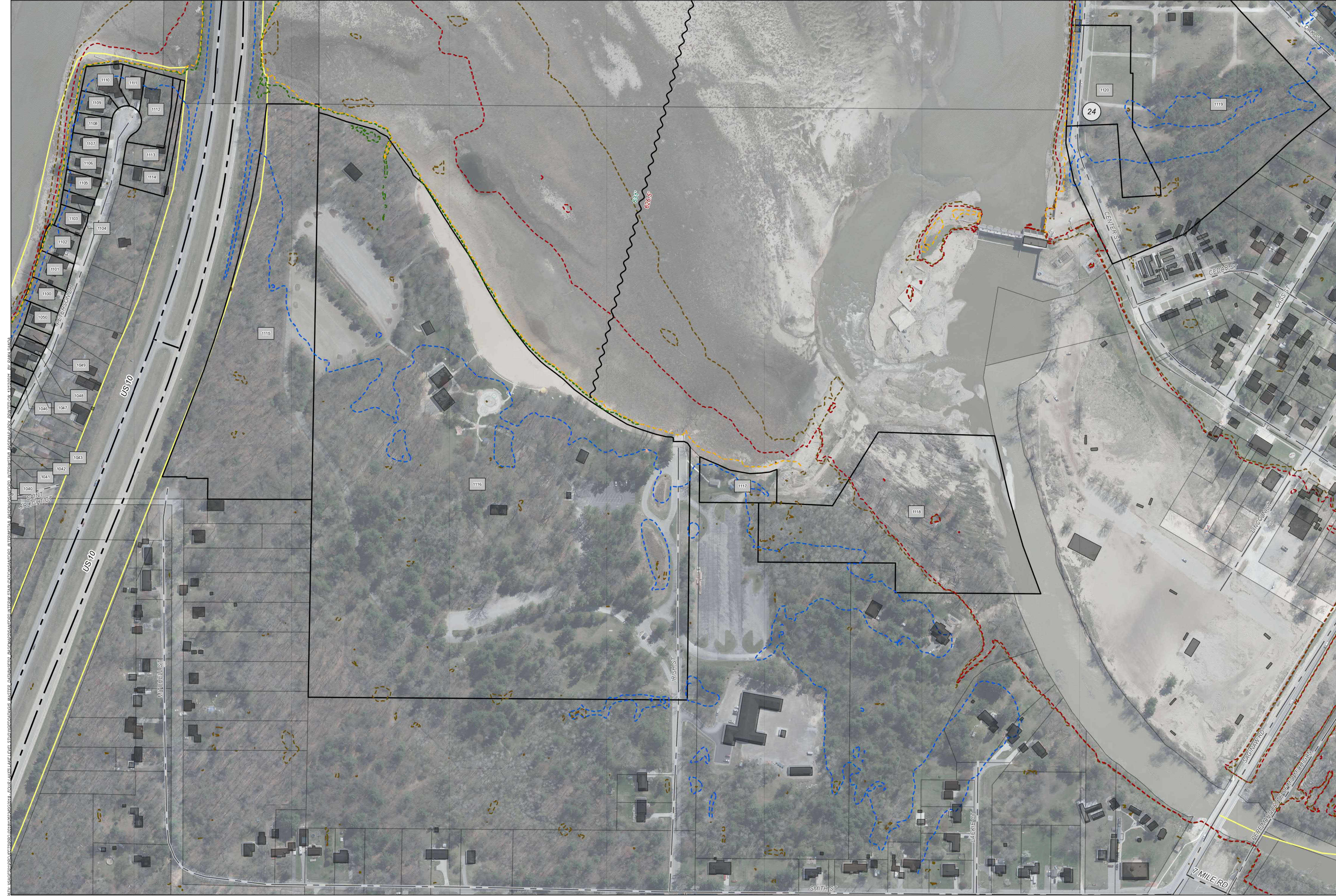
SANFORD DAM - INTERIM STABILIZATION
MIDLAND COUNTY, MICHIGAN

SANFORD DAM - INTERIM STABILIZATION
EGLE PART 31 PERMIT APPLICATION



DE. BY: RKS	CH. BY: WTM	PROJECT NO.
DR. BY: RKS	APP. BY: RBH	126234SG2018

STDs.	SHEET 12 OF 22	DR
DATE: DECEMBER 2021	FILE NO. DR-4232	12
SCALE: AS SHOWN		



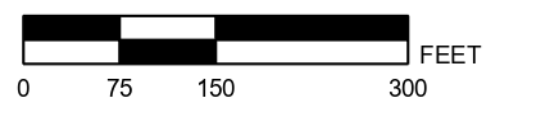
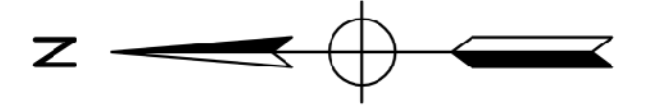


PART 31 PERMIT APPLICATION SANFORD DAM INTERIM STABILIZATION INUNDATION MAPPING

JEROME TOWNSHIP, MIDLAND COUNTY, MICHIGAN



AREA MAP
NOT TO SCALE



LEGEND

- POINTS OF INTEREST
- # PARCEL REFERENCE NUMBER (REFER TO PROPERTY OWNERSHIP SPREADSHEET)
- - - INTERIM STABILIZATION BOUNDARY
- - - POST FLOOD 100 YR BOUNDARY
- - - BASELINE 100 YR BOUNDARY (FEMA)
- - - LEGAL LAKE LEVEL @ 630.8 FT
- - - FLOWAGE RIGHTS CONTOUR @ 638.2 FT
- - - MODEL LIMITS
- ~ ELEVATION REFERENCE LINE (FEMA ELEV / INTERIM STABILIZATION ELEV)
- BUILDING FOOTPRINTS
- ▭ LAKEFRONT PARCELS (FROM MIDLAND GIS)
- ▭ MIDLAND GIS PARCELS
- STATE ROADS
- COUNTY ROADS
- LOCAL ROADS
- ▭ VILLAGE BOUNDARY
- ▭ MUNICIPALITY BOUNDARY
- # SECTION

RKS	EGLE	BASED ON COMMENTS FROM EGLE ON 12/09/2021	12/09/2021
BY	MARK	REVISIONS	DATE

THE WORK REPRESENTED BY THIS DRAWING WAS DESIGNED BY THE ENGINEER FOR THIS SPECIFIC APPLICATION AND SPECIFIC LOCATION (AS DESCRIBED HEREIN) IN ACCORDANCE WITH THE CONDITIONS PREVALENT AT THE TIME THE DESIGN WAS DONE. THE ENGINEER DOES NOT GUARANTEE AND WILL NOT BE LIABLE FOR ANY OTHER LOCATION, CONDITION, DESIGN OR PURPOSE.

SANFORD DAM - INTERIM STABILIZATION
MIDLAND COUNTY, MICHIGAN

SANFORD DAM - INTERIM STABILIZATION
EGLE PART 31 PERMIT APPLICATION

Spicer group
SAGINAW'S OFFICE
200 S. Washington Ave.
Saginaw, MI 48607
Tel: 989-754-4717
www.SpicerGroup.com

DE. BY: RKS	CH. BY: WTM	PROJECT NO.
DR. BY: RKS	APP. BY: RBH	126234SG2018

STDS.	SHEET 13 OF 22	DR
DATE: DECEMBER 2021	FILE NO. DR-4232	13
SCALE: AS SHOWN		



PATH: \\SPICERGROUP\SERVERS\PROJECTS\2021\126234SG2018\DRAWINGS\PART31\EGLE\EGLE_PART31_PERMIT_APPLICATION.dwg

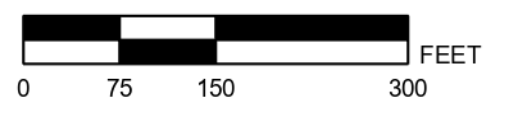
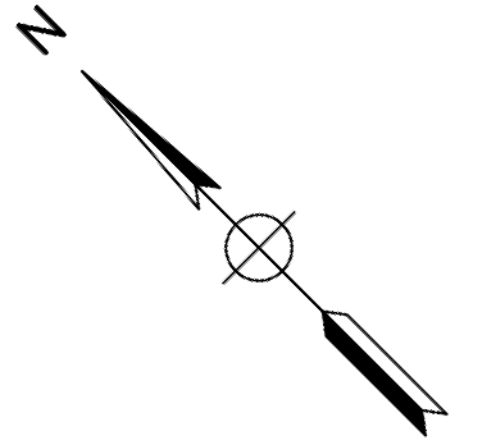


PART 31 PERMIT APPLICATION SANFORD DAM INTERIM STABILIZATION INUNDATION MAPPING

JEROME TOWNSHIP, MIDLAND COUNTY, MICHIGAN



AREA MAP
NOT TO SCALE



LEGEND

- POINTS OF INTEREST
- # PARCEL REFERENCE NUMBER (REFER TO PROPERTY OWNERSHIP SPREADSHEET)
- - - INTERIM STABILIZATION BOUNDARY
- - - POST FLOOD 100 YR BOUNDARY
- - - BASELINE 100 YR BOUNDARY (FEMA)
- - - LEGAL LAKE LEVEL @ 630.8 FT
- - - FLOWAGE RIGHTS CONTOUR @ 638.2 FT
- - - MODEL LIMITS
- # ELEVATION REFERENCE LINE (FEMA ELEV / INTERIM STABILIZATION ELEV)
- BUILDING FOOTPRINTS
- LAKEFRONT PARCELS (FROM MIDLAND GIS)
- MIDLAND GIS PARCELS
- STATE ROADS
- COUNTY ROADS
- LOCAL ROADS
- VILLAGE BOUNDARY
- MUNICIPALITY BOUNDARY
- # SECTION



RKS	EGLE	BASED ON COMMENTS FROM EGLE ON 12/09/2021	12/09/2021
BY	MARK	REVISIONS	DATE

THE WORK REPRESENTED BY THIS DRAWING WAS DESIGNED BY THE ENGINEER FOR THIS SPECIFIC APPLICATION AND SPECIFIC LOCATION AS DESCRIBED HEREIN IN ACCORDANCE WITH THE CONDITIONS PREVALENT AT THE TIME THE DESIGN WAS DONE. THE ENGINEER DOES NOT GUARANTEE AND WILL NOT BE LIABLE FOR ANY OTHER LOCATION, CONDITION, DESIGN OR PURPOSE.

SANFORD DAM - INTERIM STABILIZATION
MIDLAND COUNTY, MICHIGAN

SANFORD DAM - INTERIM STABILIZATION
EGLE PART 31 PERMIT APPLICATION

SAGINAW'S OFFICE
200 S. Washington Ave.
Saginaw, MI 48607
Tel: 989-754-4717
www.SpicerGroup.com

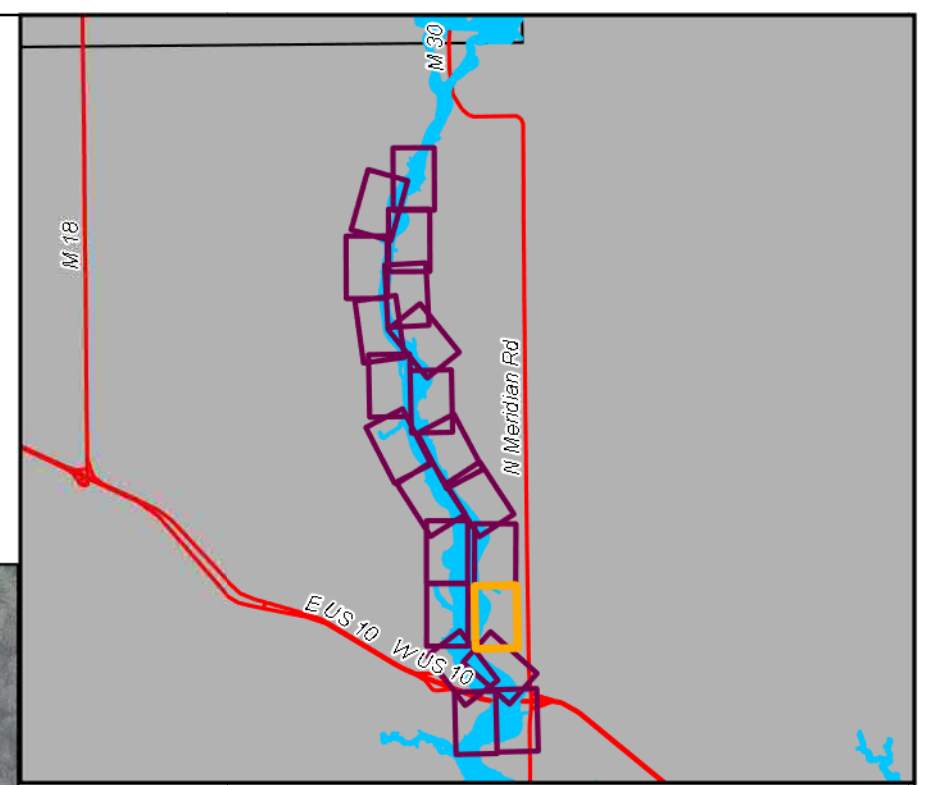
DE. BY: RKS	CH. BY: WTM	PROJECT NO.
DR. BY: RKS	APP. BY: RBH	126234SG2018

STDS.	SHEET 14 OF 22	DR
DATE: DECEMBER 2021	FILE NO. DR-4232	14
SCALE: AS SHOWN		

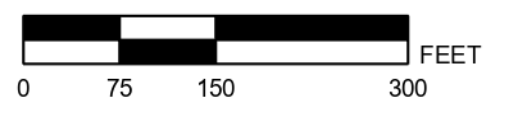
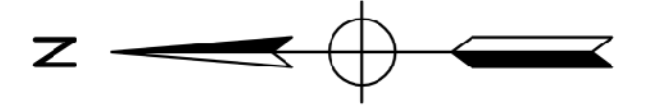


PART 31 PERMIT APPLICATION SANFORD DAM INTERIM STABILIZATION INUNDATION MAPPING

JEROME TOWNSHIP, MIDLAND COUNTY, MICHIGAN



AREA MAP
NOT TO SCALE



LEGEND

- POINTS OF INTEREST
- # PARCEL REFERENCE NUMBER (REFER TO PROPERTY OWNERSHIP SPREADSHEET)
- - - INTERIM STABILIZATION BOUNDARY
- - - POST FLOOD 100 YR BOUNDARY
- - - BASELINE 100 YR BOUNDARY (FEMA)
- - - LEGAL LAKE LEVEL @ 630.8 FT
- - - FLOWAGE RIGHTS CONTOUR @ 638.2 FT
- - - MODEL LIMITS
- - - ELEVATION REFERENCE LINE (FEMA ELEV / INTERIM STABILIZATION ELEV)
- BUILDING FOOTPRINTS
- LAKEFRONT PARCELS (FROM MIDLAND GIS)
- MIDLAND GIS PARCELS
- STATE ROADS
- COUNTY ROADS
- LOCAL ROADS
- VILLAGE BOUNDARY
- MUNICIPALITY BOUNDARY
- # SECTION



RKS	EGLE	BASED ON COMMENTS FROM EGLE ON 12/09/2021	12/09/2021
BY	MARK	REVISIONS	DATE

THE WORK REPRESENTED BY THIS DRAWING WAS DESIGNED BY THE ENGINEER FOR THIS SPECIFIC APPLICATION AND SPECIFIC LOCATION (DESCRIBED HEREIN) IN ACCORDANCE WITH THE CONDITIONS PREVALENT AT THE TIME THE DESIGN WAS DONE. THE ENGINEER DOES NOT GUARANTEE AND WILL NOT BE LIABLE FOR ANY OTHER LOCATION, CONDITION, DESIGN OR PURPOSE.

SANFORD DAM - INTERIM STABILIZATION
MIDLAND COUNTY, MICHIGAN

SANFORD DAM - INTERIM STABILIZATION
EGLE PART 31 PERMIT APPLICATION

Spicer group
 SAGINAW'S OFFICE
 200 S. Washington Ave.
 Saginaw, MI 48607
 Tel: 989-754-4717
 www.SpicerGroup.com

DE BY: RKS	CH BY: WTM	PROJECT NO.
DR BY: RKS	APP BY: RBH	126234SG2018

STDs.	SHEET 15 OF 22	DR 15
DATE: DECEMBER 2021	FILE NO.	DR-4232
SCALE: AS SHOWN		

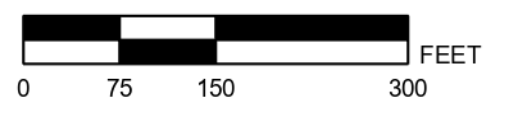
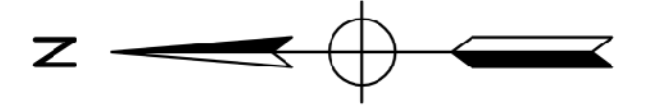


PART 31 PERMIT APPLICATION SANFORD DAM INTERIM STABILIZATION INUNDATION MAPPING

JEROME TOWNSHIP, MIDLAND COUNTY, MICHIGAN



AREA MAP
NOT TO SCALE



LEGEND

- POINTS OF INTEREST
- # PARCEL REFERENCE NUMBER (REFER TO PROPERTY OWNERSHIP SPREADSHEET)
- - - INTERIM STABILIZATION BOUNDARY
- - - POST FLOOD 100 YR BOUNDARY
- - - BASELINE 100 YR BOUNDARY (FEMA)
- - - LEGAL LAKE LEVEL @ 630.8 FT
- - - FLOWAGE RIGHTS CONTOUR @ 638.2 FT
- MODEL LIMITS
- ~ ELEVATION REFERENCE LINE (FEMA ELEV / INTERIM STABILIZATION ELEV)
- BUILDING FOOTPRINTS
- LAKEFRONT PARCELS (FROM MIDLAND GIS)
- MIDLAND GIS PARCELS
- STATE ROADS
- COUNTY ROADS
- LOCAL ROADS
- ▭ VILLAGE BOUNDARY
- ▭ MUNICIPALITY BOUNDARY
- # SECTION



RKS	EGLE	BASED ON COMMENTS FROM EGLE ON 12/09/2021	12/09/2021
BY	MARK	REVISIONS	DATE

THE WORK REPRESENTED BY THIS DRAWING WAS DESIGNED BY THE ENGINEER FOR THIS SPECIFIC APPLICATION AND SPECIFIC LOCATION (AS DESCRIBED HEREIN) IN ACCORDANCE WITH THE CONDITIONS PREVALENT AT THE TIME THE DESIGN WAS DONE. THE ENGINEER DOES NOT GUARANTEE AND WILL NOT BE LIABLE FOR ANY OTHER LOCATION, CONDITION, DESIGN OR PURPOSE.

SANFORD DAM - INTERIM STABILIZATION
MIDLAND COUNTY, MICHIGAN

SANFORD DAM - INTERIM STABILIZATION
EGLE PART 31 PERMIT APPLICATION

Spicer group
SAGINAW'S OFFICE
200 S. Washington Ave.
Saginaw, MI 48607
Tel: 989-754-4717
www.SpicerGroup.com

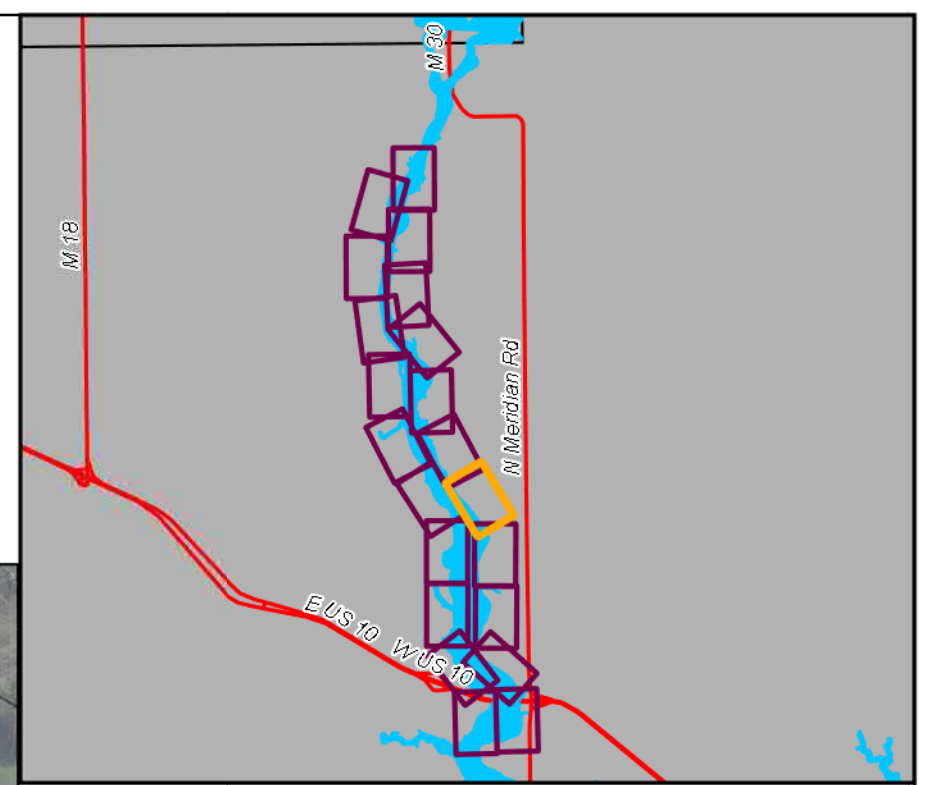
DE. BY: RKS	CH. BY: WTM	PROJECT NO.
DR. BY: RKS	APP. BY: RBH	126234SG2018
STDS.	SHEET 16 OF 22	DR 16
DATE: DECEMBER 2021	FILE NO. DR-4232	
SCALE: AS SHOWN		

DATA SOURCE: AERIAL PHOTOGRAPHY FROM GOOGLE EARTH; GIS DATA FROM MIDLAND COUNTY GIS; LEGAL LAKE LEVEL FROM LEGAL RECORDS; FLOWAGE RIGHTS CONTOUR FROM EGLE; INTERIM STABILIZATION BOUNDARY FROM EGLE; POST FLOOD 100 YR BOUNDARY FROM EGLE; BASELINE 100 YR BOUNDARY FROM FEMA; BUILDING FOOTPRINTS FROM AERIAL PHOTOGRAPHY; PARCEL REFERENCE NUMBERS FROM PROPERTY OWNERSHIP SPREADSHEET; MUNICIPALITY BOUNDARY FROM MIDLAND COUNTY GIS; VILLAGE BOUNDARY FROM MIDLAND COUNTY GIS; STATE ROADS FROM MIDLAND COUNTY GIS; COUNTY ROADS FROM MIDLAND COUNTY GIS; LOCAL ROADS FROM MIDLAND COUNTY GIS; MODEL LIMITS FROM EGLE; ELEVATION REFERENCE LINE FROM EGLE; INTERIM STABILIZATION ELEVATION FROM EGLE; DATE: 12/09/2021; DRAWN BY: RKS; CHECKED BY: WTM; PROJECT NO. 126234SG2018; SHEET 16 OF 22; FILE NO. DR-4232; SCALE: AS SHOWN.

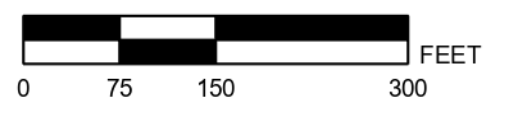
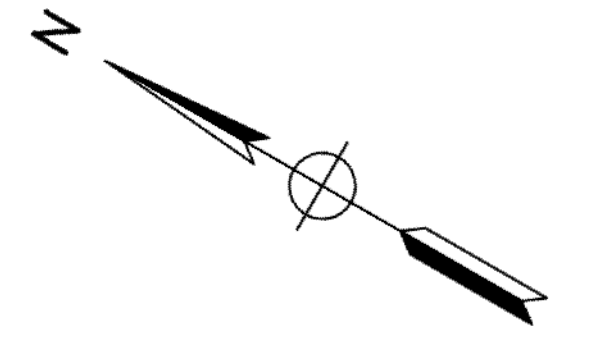


PART 31 PERMIT APPLICATION SANFORD DAM INTERIM STABILIZATION INUNDATION MAPPING

EDENVILLE / JEROME TOWNSHIP, MIDLAND COUNTY, MICHIGAN



AREA MAP
NOT TO SCALE



LEGEND

- POINTS OF INTEREST
- # PARCEL REFERENCE NUMBER (REFER TO PROPERTY OWNERSHIP SPREADSHEET)
- - - INTERIM STABILIZATION BOUNDARY
- - - POST FLOOD 100 YR BOUNDARY
- - - BASELINE 100 YR BOUNDARY (FEMA)
- - - LEGAL LAKE LEVEL @ 630.8 FT
- - - FLOWAGE RIGHTS CONTOUR @ 638.2 FT
- - - MODEL LIMITS
- # ELEVATION REFERENCE LINE (FEMA ELEV / INTERIM STABILIZATION ELEV)
- BUILDING FOOTPRINTS
- LAKEFRONT PARCELS (FROM MIDLAND GIS)
- MIDLAND GIS PARCELS
- STATE ROADS
- COUNTY ROADS
- LOCAL ROADS
- VILLAGE BOUNDARY
- MUNICIPALITY BOUNDARY
- # SECTION



RKS	EGLE	BASED ON COMMENTS FROM EGLE ON 12/09/2021	12/09/2021
BY	MARK	REVISIONS	DATE

THE WORK REPRESENTED BY THIS DRAWING WAS DESIGNED BY THE ENGINEER FOR THIS SPECIFIC APPLICATION AND SPECIFIC LOCATION (DESCRIBED HEREIN) IN ACCORDANCE WITH THE CONDITIONS PREVALENT AT THE TIME THE DESIGN WAS DONE. THE ENGINEER DOES NOT GUARANTEE AND WILL NOT BE LIABLE FOR ANY OTHER LOCATION, CONDITION, DESIGN OR PURPOSE.

SANFORD DAM - INTERIM STABILIZATION
MIDLAND COUNTY, MICHIGAN

SANFORD DAM - INTERIM STABILIZATION
EGLE PART 31 PERMIT APPLICATION

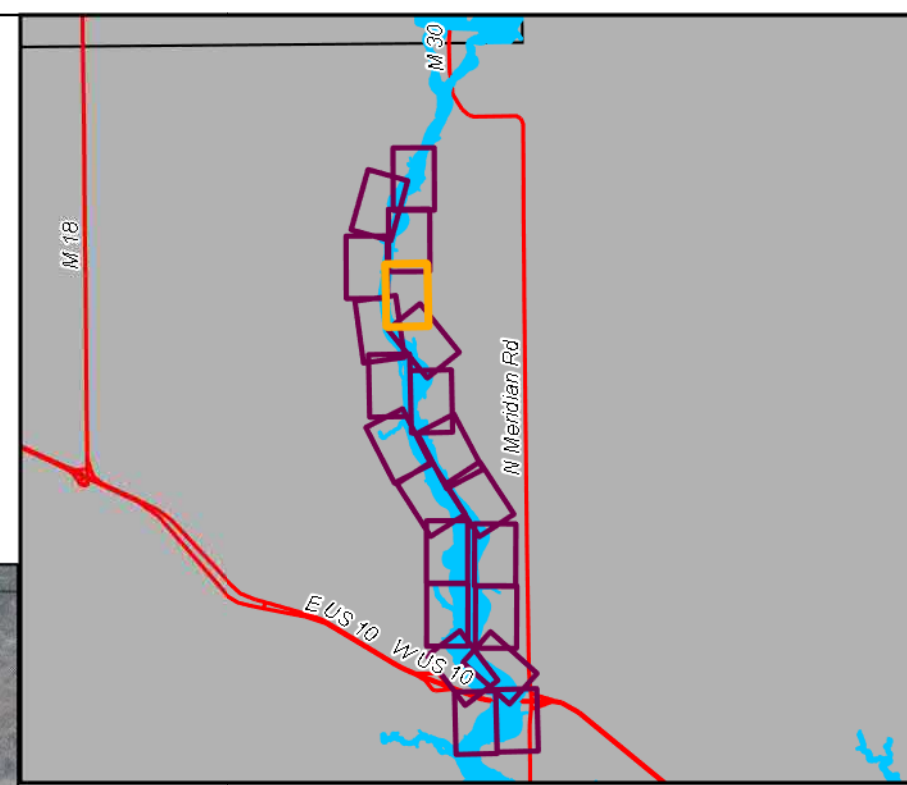
SAGINAW'S OFFICE
200 S. Washington Ave.
Saginaw, MI 48607
Tel: 989-754-4717
www.SpicerGroup.com

DE BY: RKS	CH BY: WTM	PROJECT NO.
DR BY: RKS	APP BY: RBH	126234SG2018
STDs.	SHEET 17 OF 22	DR 17
DATE: DECEMBER 2021	FILE NO. DR-4232	
SCALE: AS SHOWN		

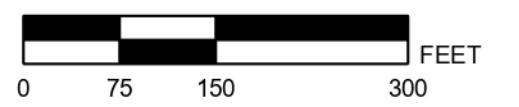
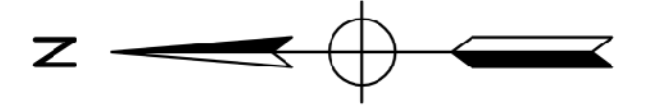


PART 31 PERMIT APPLICATION SANFORD DAM INTERIM STABILIZATION INUNDATION MAPPING

EDENVILLE TOWNSHIP, MIDLAND COUNTY, MICHIGAN



AREA MAP
NOT TO SCALE



LEGEND

- POINTS OF INTEREST
- # PARCEL REFERENCE NUMBER (REFER TO PROPERTY OWNERSHIP SPREADSHEET)
- - - INTERIM STABILIZATION BOUNDARY
- - - POST FLOOD 100 YR BOUNDARY
- - - BASELINE 100 YR BOUNDARY (FEMA)
- - - LEGAL LAKE LEVEL @ 630.8 FT
- - - FLOWAGE RIGHTS CONTOUR @ 638.2 FT
- MODEL LIMITS
- ~ ELEVATION REFERENCE LINE (FEMA ELEV / INTERIM STABILIZATION ELEV)
- BUILDING FOOTPRINTS
- LAKEFRONT PARCELS (FROM MIDLAND GIS)
- MIDLAND GIS PARCELS
- STATE ROADS
- COUNTY ROADS
- LOCAL ROADS
- VILLAGE BOUNDARY
- MUNICIPALITY BOUNDARY
- # SECTION



RKS	EGLE	BASED ON COMMENTS FROM EGLE ON 12/09/2021	12/09/2021
BY	MARK	REVISIONS	DATE

THE WORK REPRESENTED BY THIS DRAWING WAS DESIGNED BY THE ENGINEER FOR THIS SPECIFIC APPLICATION AND SPECIFIC LOCATION (AS DESCRIBED HEREIN) IN ACCORDANCE WITH THE CONDITIONS PREVALENT AT THE TIME THE DESIGN WAS DONE. THE ENGINEER DOES NOT GUARANTEE AND WILL NOT BE LIABLE FOR ANY OTHER LOCATION, CONDITION, DESIGN OR PURPOSE.

SANFORD DAM - INTERIM STABILIZATION
MIDLAND COUNTY, MICHIGAN

SANFORD DAM - INTERIM STABILIZATION
EGLE PART 31 PERMIT APPLICATION

Spicer group
SAGINAW'S OFFICE
200 S. Washington Ave.
Saginaw, MI 48607
Tel: 989-754-4717
www.SpicerGroup.com

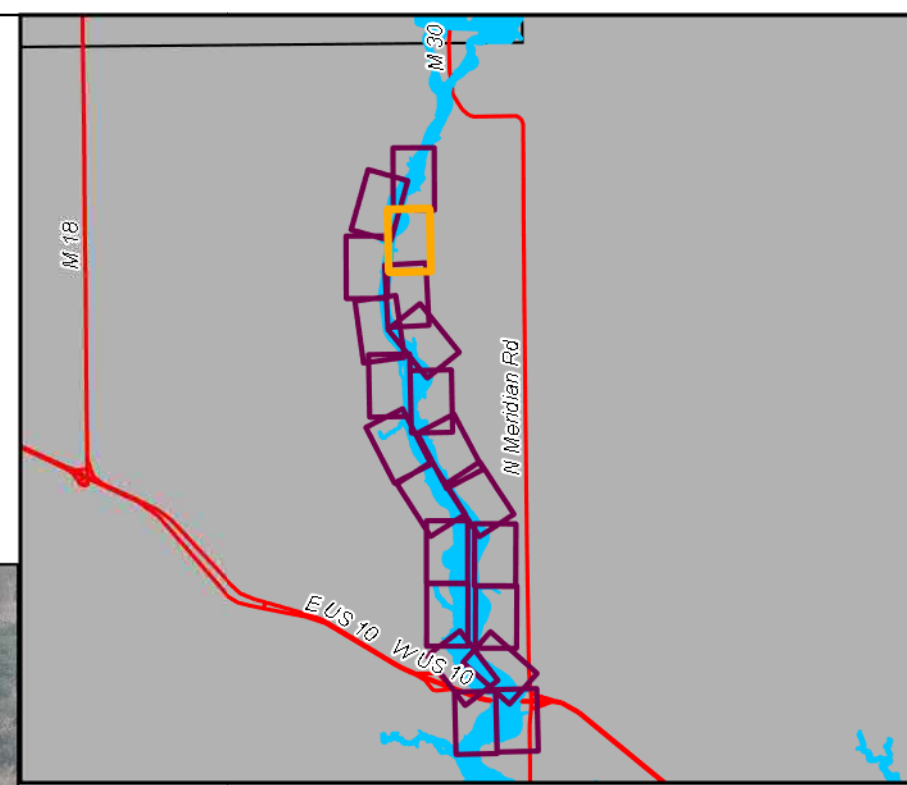
DE. BY: RKS	CH. BY: WTM	PROJECT NO.
DR. BY: RKS	APP. BY: RBH	126234SG2018

STDs.	SHEET 21 OF 22	DR
DATE: DECEMBER 2021	FILE NO. DR-4232	21
SCALE: AS SHOWN		

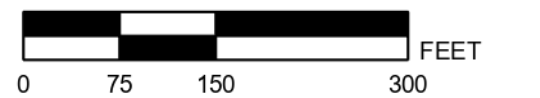


PART 31 PERMIT APPLICATION SANFORD DAM INTERIM STABILIZATION INUNDATION MAPPING

EDENVILLE TOWNSHIP, MIDLAND COUNTY, MICHIGAN



AREA MAP
NOT TO SCALE



LEGEND

- POINTS OF INTEREST
- # PARCEL REFERENCE NUMBER (REFER TO PROPERTY OWNERSHIP SPREADSHEET)
- INTERIM STABILIZATION BOUNDARY
- POST FLOOD 100 YR BOUNDARY
- BASELINE 100 YR BOUNDARY (FEMA)
- LEGAL LAKE LEVEL @ 630.8 FT
- FLOWAGE RIGHTS CONTOUR @ 638.2 FT
- MODEL LIMITS
- ELEVATION REFERENCE LINE (FEMA ELEV / INTERIM STABILIZATION ELEV)
- BUILDING FOOTPRINTS
- LAKEFRONT PARCELS (FROM MIDLAND GIS)
- MIDLAND GIS PARCELS
- STATE ROADS
- COUNTY ROADS
- LOCAL ROADS
- VILLAGE BOUNDARY
- MUNICIPALITY BOUNDARY
- # SECTION

RKS	EGLE	BASED ON COMMENTS FROM EGLE ON 12/09/2021	12/09/2021
BY	MARK	REVISIONS	DATE

THE WORK REPRESENTED BY THIS DRAWING WAS DESIGNED BY THE ENGINEER FOR THIS SPECIFIC APPLICATION AND SPECIFIC LOCATION (DESCRIBED HEREIN) IN ACCORDANCE WITH THE CONDITIONS PREVALENT AT THE TIME THE DESIGN WAS DONE. THE ENGINEER DOES NOT GUARANTEE AND WILL NOT BE LIABLE FOR ANY OTHER LOCATION, CONDITION, DESIGN OR PURPOSE.

SANFORD DAM - INTERIM STABILIZATION
MIDLAND COUNTY, MICHIGAN

SANFORD DAM - INTERIM STABILIZATION
EGLE PART 31 PERMIT APPLICATION

Spicer group
SAGINAW'S OFFICE
200 S. Washington Ave.
Saginaw, MI 48607
Tel: 989-754-4717
www.SpicerGroup.com

DE BY: RKS	CH BY: WTM	PROJECT NO.
DR BY: RKS	APP BY: RBH	126234SG2018

STDS.	SHEET 22 OF 22	DR 22
DATE: DECEMBER 2021	FILE NO.	DR-4232
SCALE: AS SHOWN		



PART 31 PERMIT APPLICATION FOR INTERIM STABILIZATION OF SANFORD DAM, MIDLAND COUNTY, MICHIGAN. DATE: 12/09/2021. BY: RKS.