



FOUR LAKES TASK FORCE February News

EVENTS

COMPREHENSIVE WINTER WEATHER WORK PLANS

February 6, 2024

Joint County Boards of Commissioners meeting to approve assessment rolls

4:00 p.m.

Dow Diamond

March 19, 2024

FLTF Board Meeting

12:00-2:00 p.m.

Michigan winter weather conditions impaired but did not stop construction activities at the dams. Crews on the sites follow a comprehensive safety plan that ensures work is completed safely and with reasonable productivity in preparation for winter weather. Some highlights of the plan:

- Snow removal and salt placement at work sites and construction logistics areas
- Temperature and windchill guidelines below which work is not permitted
- Guidelines for required personal winter apparel
- Anti-slip foot cleats for people to prevent slips and falls

Engineering teams continue to work with the Michigan Department of Environment, Great Lakes, and Energy and U.S. Fish and Wildlife on acquiring and modifying permit applications.



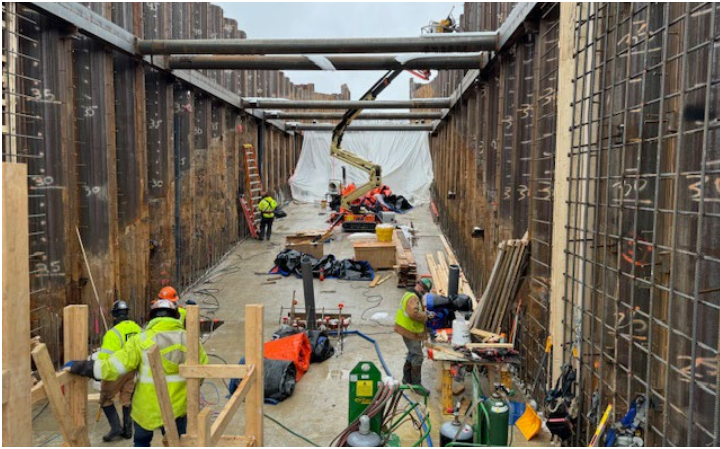
UPCOMING MILESTONES

Install cofferdam at Smallwood Dam

Complete Secord auxiliary spillway by end of April

Acquire EGLE and EPA permit approval for Edenville restoration work in May

SECORD DAM



We are continuing to prepare, form, and pour concrete in the auxiliary spillway chute. Prioritizing snow removal is an added step before continuing to pour concrete. Excavation is ongoing in the auxiliary chute area. Crews are also continuing demolition and restructuring in the low-level outlet. Armoring the west embankment is nearing completion. Work will continue as long as the weather allows.

SMALLWOOD DAM



Extreme cold weather and snowstorms gave the construction crews an interesting start to 2024.

The work at Smallwood Dam continues with winter protection for all components of the work, including:

- Heating of formwork, work areas and concrete plants
- Insulating concrete placements during the curing period
- Installing heated grout plant to ensure that the curing process isn't affected by the cold
- Installing soil anchors in the auxiliary spillway

EDENVILLE DAM



Embankment, stone filter construction, and drain system work continue at the Edenville site. The embankment toe-drain system, which helps funnel water from the embankment to the river, is functionally completed. The final stone filter material has been placed and a small amount of embankment fill remains to be completed. Crews can work on less critical tasks during winter weather, such as placing rip-rap stones at the embankment base and cleaning up the site in preparation for remaining embankment construction activities west of M-30.

SANFORD DAM



Work crews are creating a temporary stone "roadway" across the river upstream and downstream of the Sanford primary spillway. This will be used to support cranes that drive steel sheet piles and allow the spillway to be de-watered so subsequent construction activities can be performed in dry, normal conditions. The engineered cofferdam system protecting the spillway will be maintained through approximately January 2025. Existing steel sheet piling placed during earlier shoreline stabilization is being removed and repositioned to make up for the new piles in the coming weeks.