



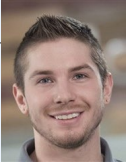
Dam Construction Updates

| Secord and Smallwood Dams

NOTES FROM GROVER the Construction Manager

SECORD

Dewatering of the left embankment has taken place to ensure stability of the embankment during excavations of the auxiliary spillway



All construction access roads and storm sewers on the west side of the dam have been completed

Steel sheet pile crews are busy constructing the cofferdam downstream of the powerhouse for the low level outlet work



SMALLWOOD

The cofferdam downstream of the powerhouse has been constructed and will undergo dewatering for the low level outlet work to commence

The auxiliary spillway has been taking shape with the steel sheet pile being driven and the upper stilling basin being constructed

Underwater divers have been on site to assist the crew with installing the downstream cofferdam to ensure a water-tight fit



FROM OUR PROGRAM DIRECTOR

I would like to take this opportunity to provide an incredible THANK YOU to everyone supporting these projects. Our functional project team has built incredible programs related to the sections contained in this update, including the update itself. The communities we are working in and the authorities with jurisdiction over the projects have been second to none. The flow of permit issuance and modifications has been smooth and is key to maintaining progress. Our consultants have offered creative solutions to every challenge we've faced. And our contractor is a true partner. Let's keep up the great teamwork. **- Adam Heinrich**



OPERATIONAL UPDATE

It has been dry and warm; lake levels are stable and river flows are low for this time of the year. The operations crew has been busy with the normal daily rounds and grass mowing. The monthly dam inspections have been completed and everything looks good. The crew has also been renovating the Edenville offices to prepare for the extra people that will be around for the restoration effort. A field trip was held at the Sanford Dam for Northeast Middle School. About 240 students learned about dam history, the environmental effects of the failures, reconstruction of the dams and how the Village of Sanford dealt with the effects during the flood and recovery efforts afterwards. Folks from the Lake Allegan Association took a tour of all the sites and inquired about the community's process of acquiring the Four Lakes dams as the future of hydroelectric dams is being analyzed.



SAFETY

During the month of May, the teams responsible for the construction and maintenance of the dams took ownership and responsibility for the safety culture on site. Remarkable levels of positive engagement have been observed at the worksites, accompanied by the diligent evaluation of significant safety observations. The implementation of fresh eye audits has been carried out successfully, yielding considerable value, and it is planned to maintain this proactive approach throughout the duration of these projects.

QUALITY

Secord and Smallwood dam projects collectively kicked-off 16 definable features of work. Production quality checks and testing are continuously being performed for excavation, imported backfills, and steel sheet pile.

ENVIRONMENTAL REGULATORY COMPLIANCE

FLTF is currently coordinating permit modifications for the auxiliary spillway at the Smallwood Dam and site access at Secord Dam with the Michigan Department of Environment, Great Lakes, and Energy. Permit modifications are a normal part of the construction process.

COST PERFORMANCE INDICATOR (CPI)

1.0

A measure of the conformance of the actual work completed to the actual cost incurred.

SCHEDULE PERFORMANCE INDICATOR (SPI)

1.0

A measure of the conformance of actual progress to the planned progress.

<1.0 = poorer-than-planned project performance
1.0 = project performance is on target
>1.0 = better-than-planned project performance