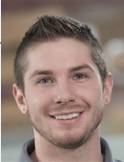




# Dam Construction Updates | Secord and Smallwood Dams

## NOTES FROM GROVER the Construction Manager

### SECORD



Minor demolition and removal of generating equipment from the powerhouse has taken place for the low level outlet work to continue

Majority of the auxiliary spillway basin has been excavated with the filter layers placed

Mud mat will be poured for the basin slopes shortly

The low level outlet (downstream of powerhouse) has had multiple concrete pours for the foundation slab and the wing wall



### SMALLWOOD

Multiple concrete pours have been poured in the low level outlet area downstream of the powerhouse

Steel plates are being welded inside the channel of the auxiliary spillway

Auxiliary spillway downstream concrete pours have taken place

**Fun Fact:** We use a crane with a concrete bucket to fly in the concrete used for the low level outlet



### SAFETY FEATURE

Fisher Contracting is maintaining strong safety standards at Secord, Smallwood, and Edenville, while actively planning for the upcoming Sanford Dam project. Each site brings forth its unique set of challenges, ranging from allocating space for equipment and material staging to the distinct nature of work to be executed.

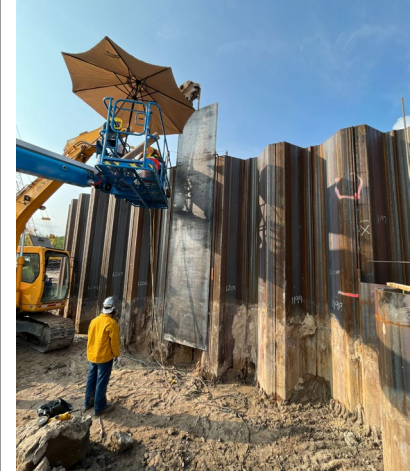
Over the past month, an increase in on-site contractors prompted Fisher Contracting, in collaboration with its partners, to conduct a comprehensive evaluation of the sites. The primary focus was optimizing the arrangement of materials and equipment to balance safety and operational efficiency.

Throughout this period, the weather posed considerable challenges. An instance of lightning necessitated a standdown during a critical concrete pour. Despite the disruption and the inherent stress, the contractors displayed exemplary commitment to safety by adhering to protocol and waiting until conditions were safe to proceed. The pour was ultimately completed successfully, highlighting the contractors' ability to prioritize safety even during demanding and time-sensitive tasks.

We take great pride in the demonstrated dedication of our contractors to upholding safety standards, especially within the context of high-pressure tasks. This commitment to safety is a testament to our collective resolve and the importance of maintaining both the wellbeing of our teams and the successful completion of our projects.

### OPERATIONAL UPDATE

The last month has been relatively rainy for this time of year and lake levels fluctuated slightly but all within expected ranges. All daily, weekly and monthly dam inspections were conducted and looked good. Embankment and grounds mowing have been a major area of focus as growing conditions have been very favorable. Fishing access sites at Secord Dam, Smallwood Dam and the Tobacco side of Edenville Dam are closed due to construction activity.



### QUALITY

Quality inspections and testing are ramping up as multiple work elements are executed simultaneously. Reinforcement steel and embedded elements are verified before each concrete pour to ensure compliance with the design.

### ENVIRONMENTAL REGULATORY COMPLIANCE

Proposed modifications to the auxiliary spillway at Smallwood Dam were granted by the Michigan Department of Environment, Great Lakes, and Energy (EGLE) and FLTF is currently coordinating on soil erosion and sediment control permitting.