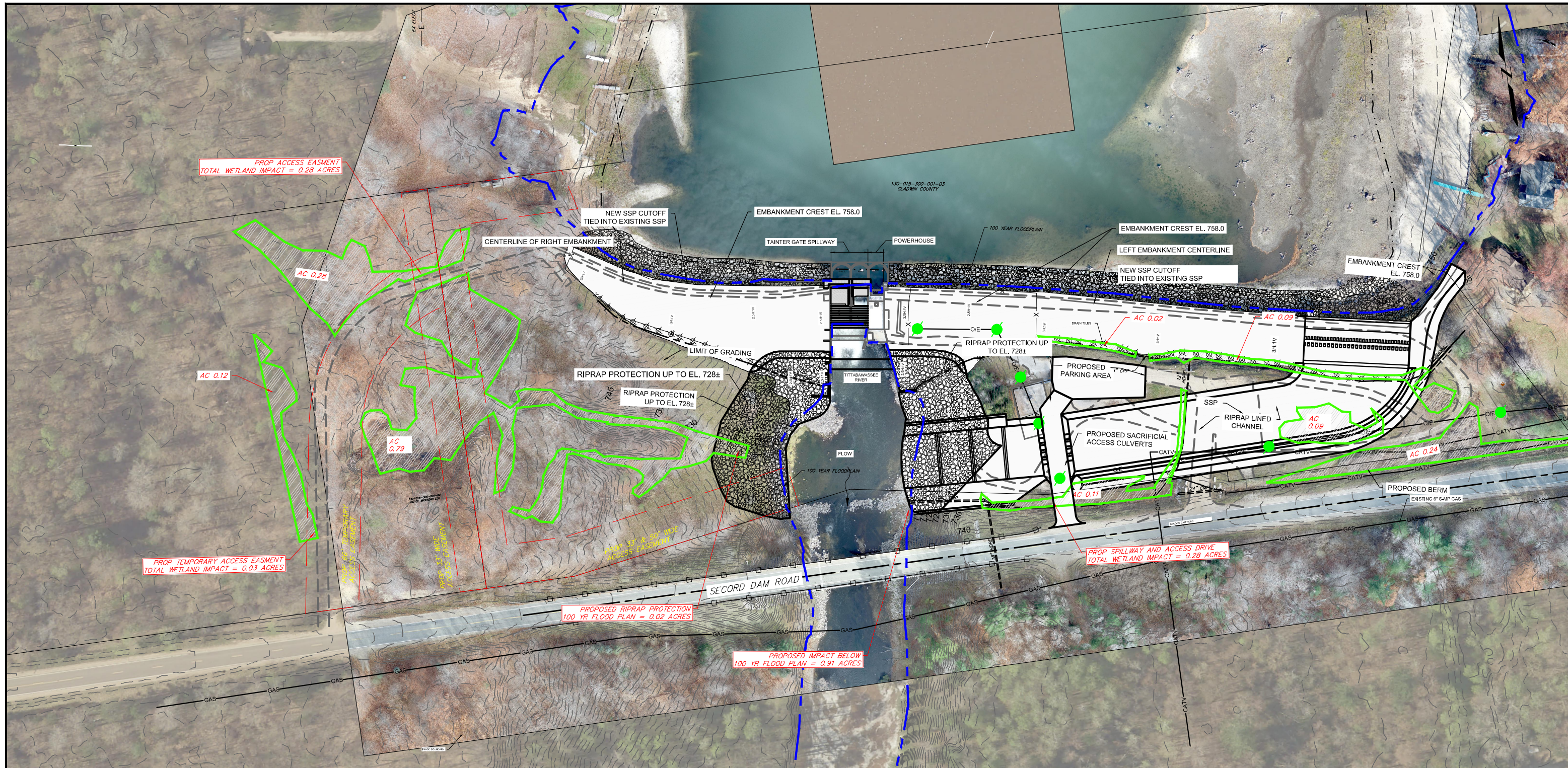
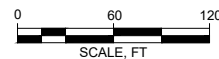


Q:\Proj2018\126234SG2018 - Four Lakes Lake Level Study\dwg\DWG_SECORD\GEI\SGI-DWG\WETLAND BOUNDARY MAP.dwg, 5/3/2021 3:05:33 PM, chad.sensabaugh



LEGEND

- RIPRAP SLOPE PROTECTION
- 100 YEAR FLOODPLAIN
- WETLAND BOUNDARY
- PARCEL BOUNDARY (GIS)
- UTILITY POLE



Attention:

 If this scale bar does not measure 1" then drawing is not original scale.

NO.	DATE	ISSUE/REVISION	APP

DRAFT

Spicer
 SAGINAW OFFICE
 230 S. Washington Ave.
 Saginaw, MI 48607 Tel.
 989-754-4717 Fax.
 989-754-4440
 www.SpicerGroup.com

GEI Consultants
 GEI CONSULTANTS OF MICHIGAN, P.C.
 10501 WEST RESEARCH DRIVE
 S1100
 MILWAUKEE, WI 53226
 (414)930-7540

Designed:	
Checked:	
Drawn:	
Approved By:	

Four Lakes Task Force
 FERC Project No. 10809
 SGI PROJECT NO. 126234SG2018
 GEI Project 2002879

Secord Dam
 Gladwin County, Michigan
**FIGURE 1 - ENVIRONMENTAL
 IMPACT LOCATION MAP -
 SECORD DAM**

DWG. NO.
 SHEET NO.
1

**NOTES: CONCEPTUAL DESIGN PLAN FOR SECORD RECONSTRUCTION
 DESIGN BY GEI CONSULTING.**